

An aerial night photograph of the TU/e campus in Eindhoven, showing several modern glass-walled buildings illuminated from within. The sky is a mix of twilight and city lights. A red diagonal line runs from the top left towards the bottom right. Overlaid on the image is the text 'where innovation starts' in a large, white, sans-serif font. The word 'where' is in a solid white font, while 'innovation' and 'starts' are in a white outline font.

# where innovation starts

# Brainport



## International Collaboration

- 32.000 companies
- €25 bn annual revenues
- €1.8 bn annual R&D investments





## Our figures

**3,145**  
personnel

**9,200** students  
(2,550 new students in 2014)

**1,000**  
foreign students

**2,890**  
scientific publications

**255**  
professors

**218**  
PhD graduates



# Research and valorization



## 3 Strategic Areas

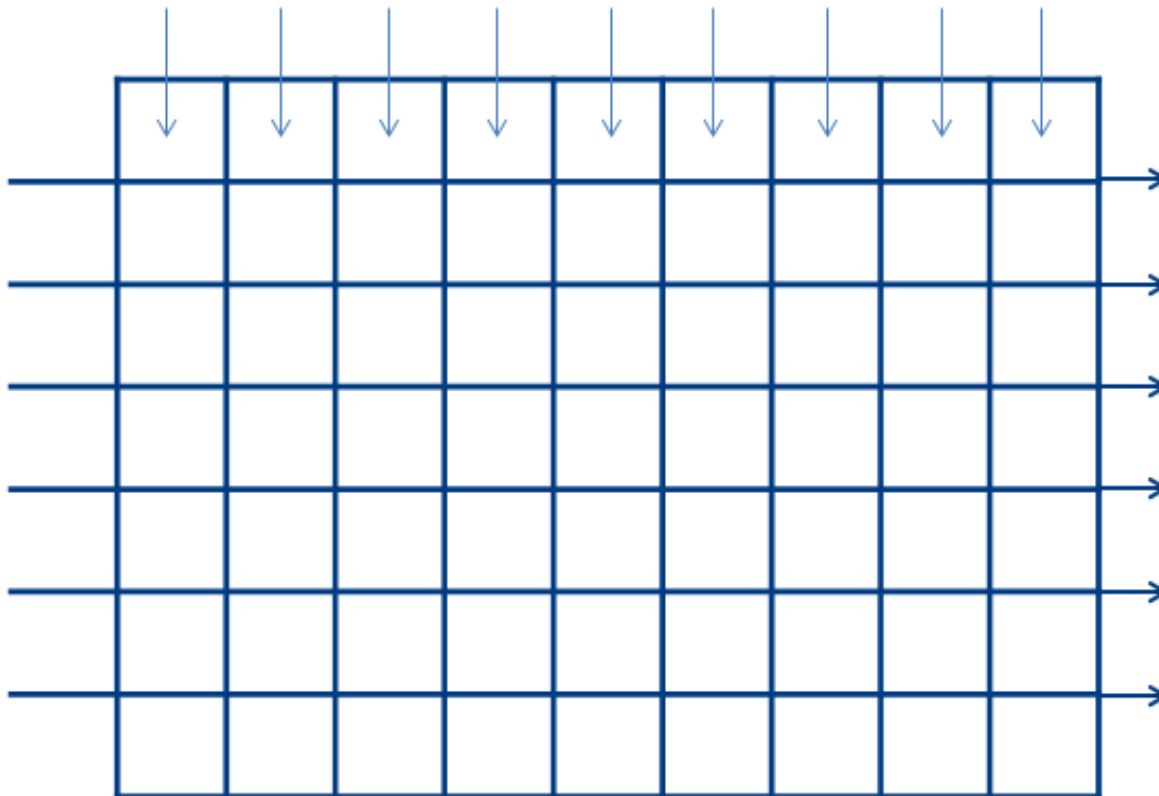
- Energy
- Health
- Smart Mobility

## 3 Centers

- High-Tech Systems
- Data Science
- High-Tech Materials



## Research & Education/Faculty



## Valorisation / strategic area's- centers

Smart Mobility

Health

Energy

Materials

Hightech Systems

Datascience



# Valorization

- Third core task of the TU/e
- Specific collaboration with industry
- Working on grand challenges of the future
- Stimulate entrepreneurship

Facilitating organisation:  
TU/e Innovation Lab



**Director**

**Office**

- **Personnel**
- **Finance**
- **Marketing**
- **Administration**

<b>Innovation Strategy &amp; Partnerships</b>	<b>Research Support</b>	<b>Business Development</b>	<b>Entrepreneurship</b>	<b>Science Park</b>
<b>Manager</b> - Government - Industry - SME	<b>Manager</b> -EU -Research Support Office - Legal affairs	<b>Manager</b> -TTO -Business Incubation -Holding	<b>Manager</b> -Entrepreneur -Student comp. Incubation - Living Labs	<b>Manager</b> -Rent buildings/ office space -development



# TU/e Innovation Lab

## Innovation Strategy & Partnerships

- Valorisation strategy
- Government
- Industry
- SME's

## Research Support

- Legal
- subsidies
- EU-office
- research support office

## Business Development

- scout/screen
- Patents
- technology transfer
- startups
- business-incubation

## Entrepreneurship

- entrepreneurship
- student startups
- living labs
- student teams
- Student incubator

## Science Park

- renting incubator space
- development startup campus



The bad news:

We are in trouble!

Dr. Teodora Chinde  
www.MedEvolutionPart.com



# Decrease in budget

SECOND and THIRD FLOW

- 20 mln Euro



- 200 PhD students

Lost earnings

200 x 95.000 Euro promotion fee

- 20 mln Euro

+

- 40 mln Euro

100 mln Euro



60 mln Euro





The good news:

we can solve it



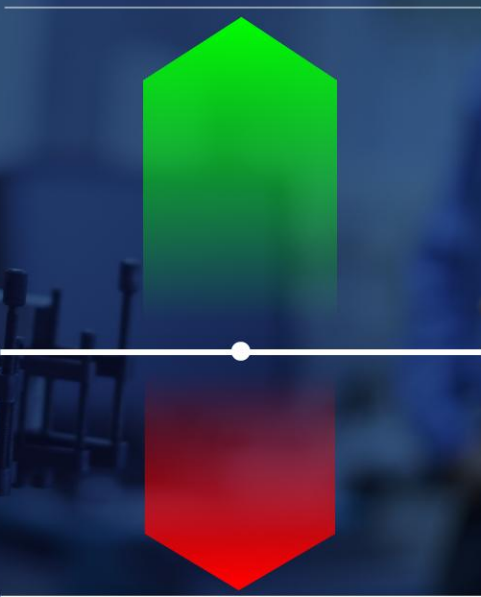
# Growth ambitions

SECOND and THIRD FLOW

150 mln Euro

100 mln Euro

60 mln Euro



90 mln Euro

# Thinking differently

- Working on pressing societal issues
- Collaborate closely with engineering industry
- Being entrepreneurial in science



# HOW

INTERNAL

EXTERNAL



Entrepreneurship  
students



Research  
result



Collaboration  
industry



External parties  
welcome

# How do we (TU/e) do that?



## Through Research, Education and Valorisation



Our goal is to play a important role  
in the knowledge economy through  
our students and scientist



Valorization Academy



# “Where science meets society”





# WHY



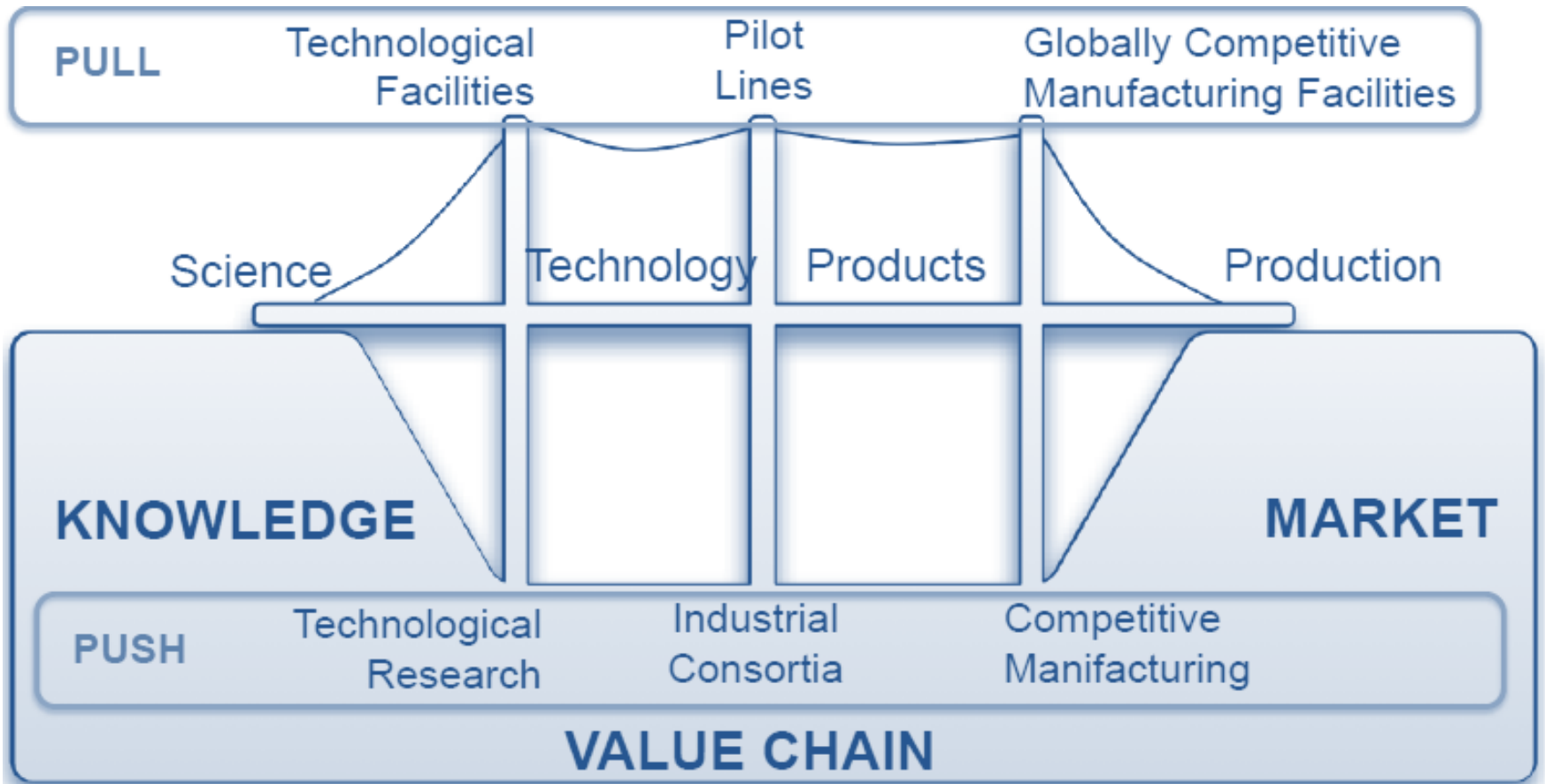


# IMPACT

“Where society meets science”

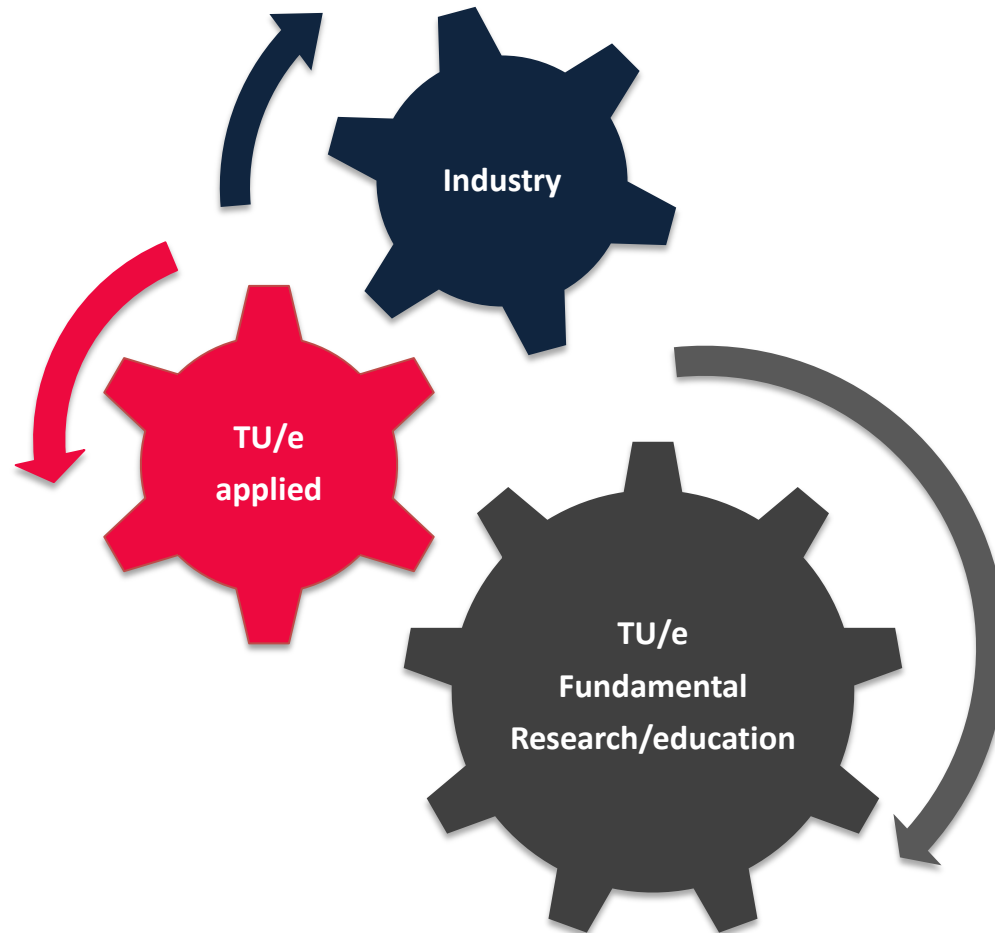
The knowledge economy is there!!

The TU/e wants to cooperate in creating  
added value

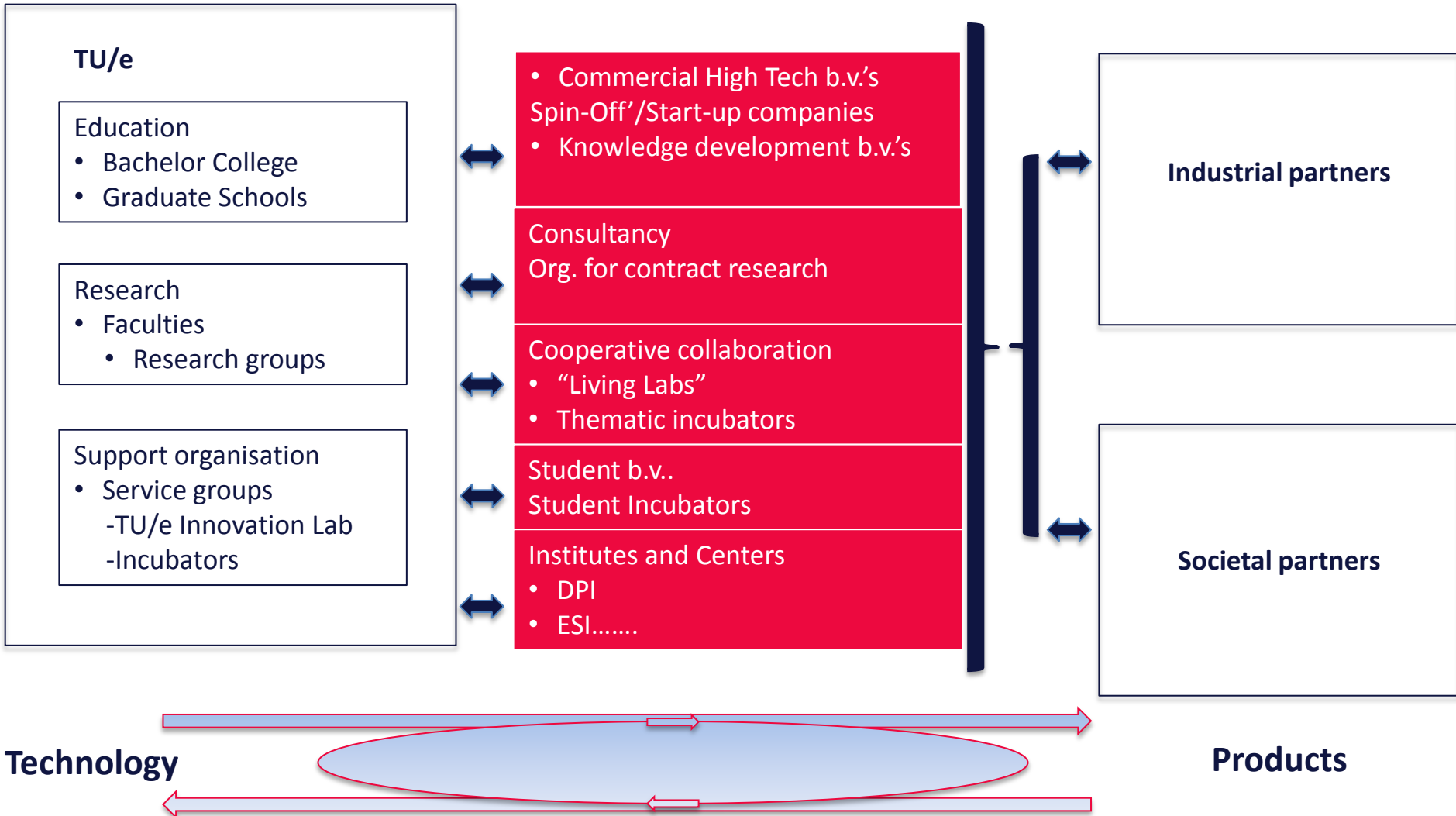




# The TU/e Interface –responsibel partnering



# The TU/e interface with industry





# IMPULS-instrument

## INVESTMENT TU/e (4 years)

**10 mln Euro**

**Cash - Board of Directors:**

50 PhDs x 50.000 x 4

**9 mln Euro**

**In kind - Faculty:**

50 PhDs x 45.000 x 4

**19 mln Euro**

## INVESTMENT INDUSTRY (4 years)

**19 mln Euro**

50 PhDs x 95.000 x 4

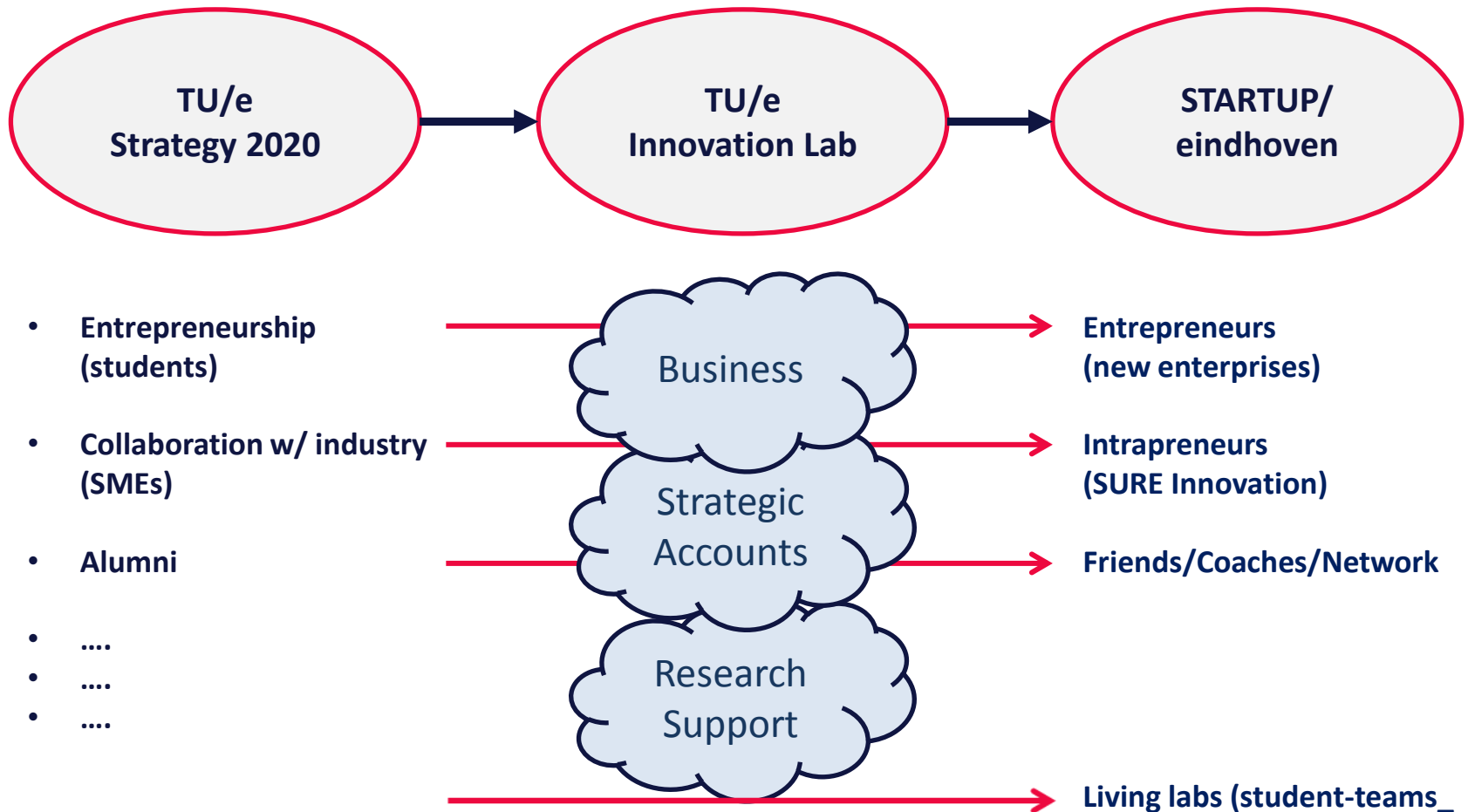
**19 mln Euro**

# Multiplier

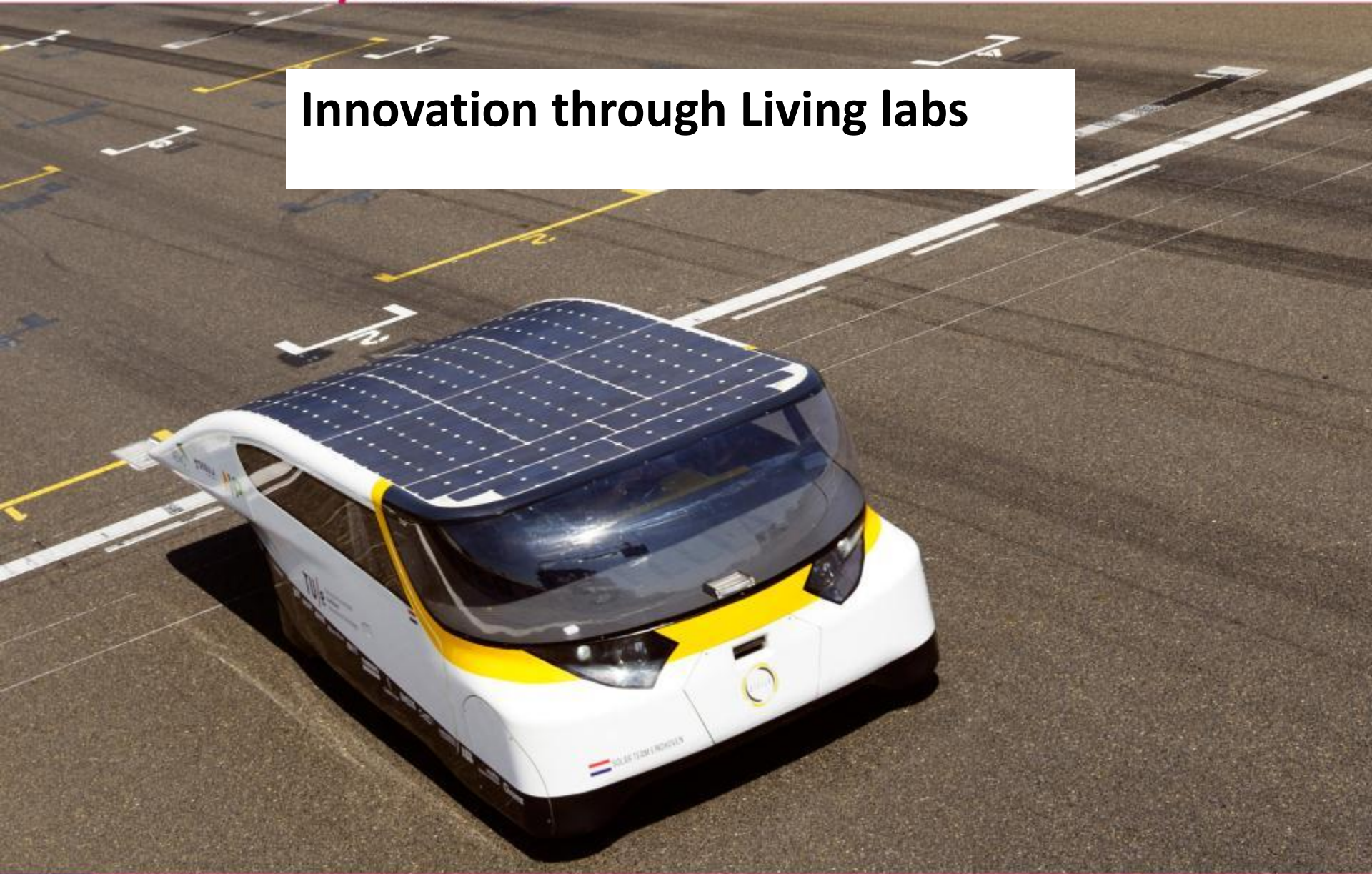




## The student-incubator of TU/e



# Innovation through Living labs





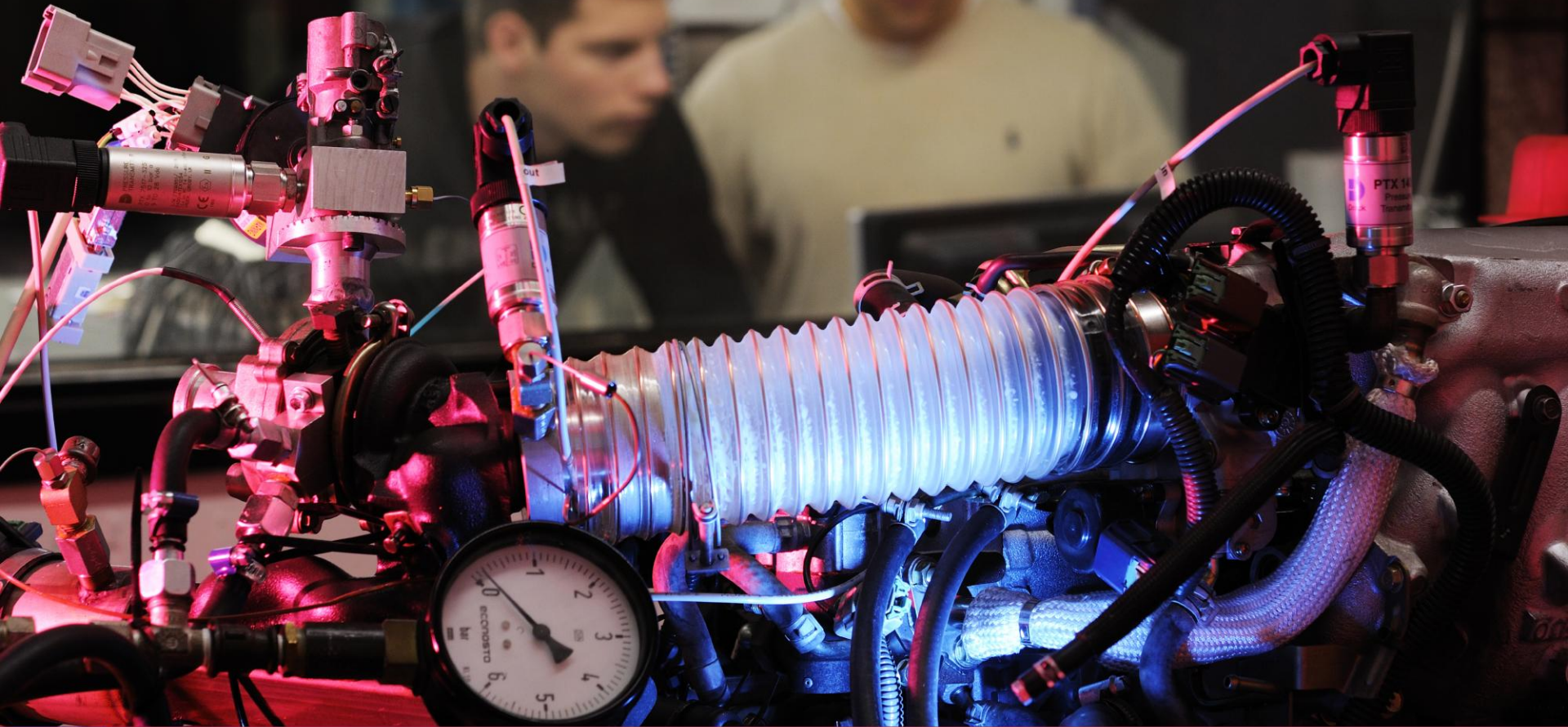
# Business development





# Business Development #2

# TU/e INNOVATION LAB





Students

Scientists

External  
entrepreneurs

TU/e INNOVATION LAB

COUNTER

SCOUTING

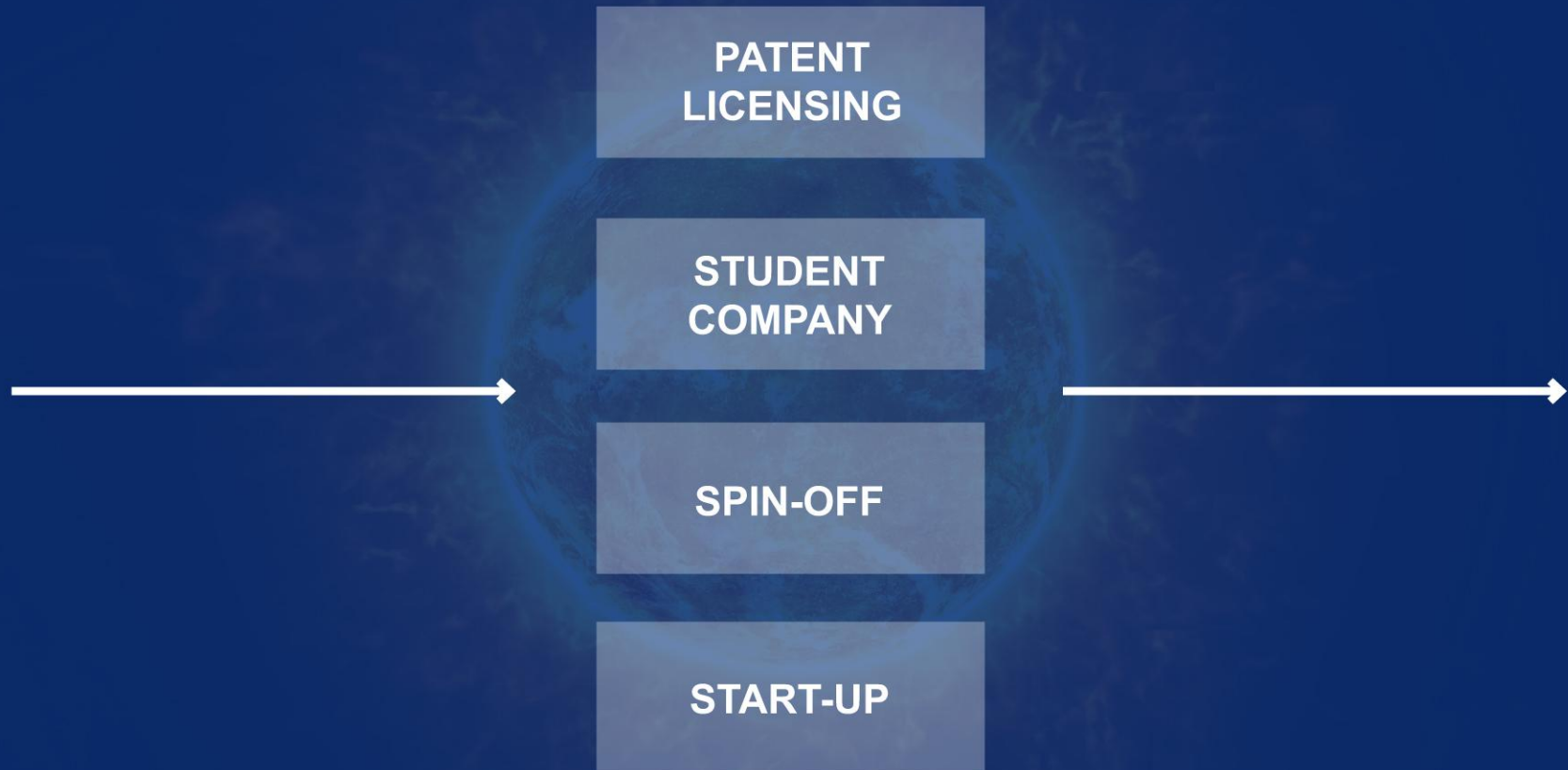
SCREENING

TU/e INNOVATION LAB

Developing  
Business Case

Patent  
application







# Valorization



## Figures for 2014

- Spin-offs (patents): 5 (124 since 1998)
- Start-ups (TU/e knowledge): 25 (170 since 1998)
- Patents TU/e, (co-)owned: 66
- Patents third party, TU/e (co-)inventor: 12 (536 since 2000)
- Licences TU/e knowledge: 11
- Companies, foundations and institutions TU/e Campus: 196



# Valorization

A close-up photograph of a scientist wearing a white hairnet and a blue lab coat. The scientist is focused on a piece of laboratory equipment, possibly a bioreactor or incubator, and is pouring a dark liquid from a stainless steel container into a circular opening. The background shows various lab components like hoses and pipes.

## Incubators / starters TU/e per 2014

- STARTUP/Eindhoven: 27 student entrepreneurs with 18 promising projects
- Establishing own company: 38 students with 35 companies



**TU** **e**

Technische Universiteit  
**Eindhoven**  
University of Technology

# Where Business Meets Science

